



## COVID-19 Updates and information for February 5th

### Covid-19 vaccinations update

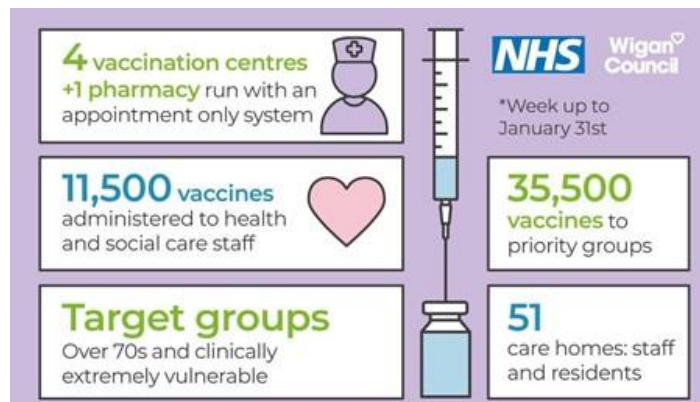
The Covid-19 vaccinations are progressing well in the borough, with over 35,500 vaccinations given to people in priority groups and an additional 11,500 to health and social care staff and all residents and staff of the borough's 51 care homes.

Priority groups (decided by the government) are currently people aged 70+ and people who are clinically extremely vulnerable along with frontline health and social care staff.

Everyone will eventually be offered a vaccination and you will be contacted as soon as it is your turn.

If you've already had your vaccination, please remember that it is still possible for you to spread the virus between other people.

**For more information about vaccinations click here**  
**<https://www.wigan.gov.uk/Docs/PDF/Resident/Crime-Emergencies/COVID-19-Vaccination-FAQs.pdf>**



### 10 million mark for vaccines

Earlier this week, the Prime Minister gave a statement on coronavirus and provided an update on the rollout of vaccinations, confirming that ten million people have now received their first vaccine.

Statement: <https://www.gov.uk/government/speeches/prime-ministers-statement-on-coronavirus-covid-19-3-february-2022>

## Covid-19 weekly tracker

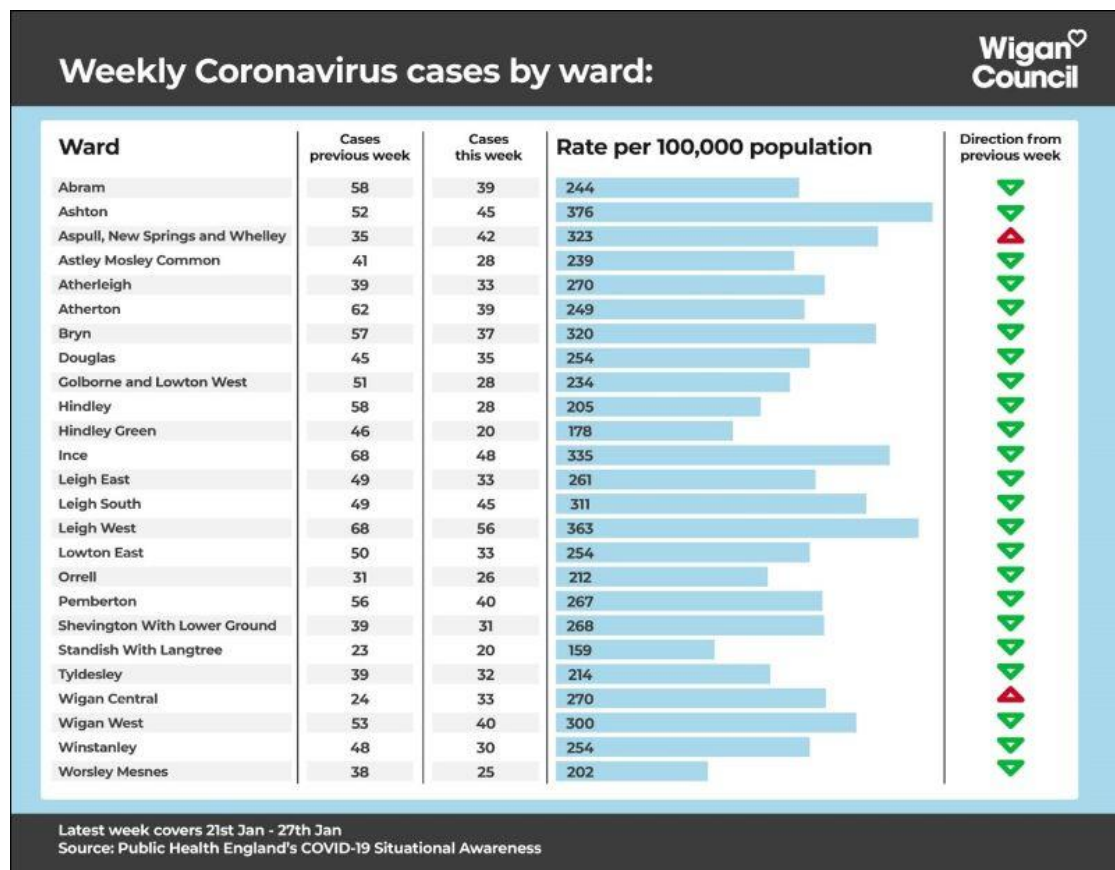
This week's Covid-19 tracker has been published and it shows:

- The rate of new cases continues to decrease in Wigan
- The new variant has become increasingly common and accounts for the majority of new cases locally
- Wigan has the sixth highest rate of new cases in Greater Manchester for the latest complete week (23rd-29th January).
- Golborne Lowton West saw a significant drop in new case last week and Lowton East case rates also dropped.

[View the full tracker here](#)

[COVID-19 Weekly Surveillance Tracker \(wigan.gov.uk\)](https://www.wigan.gov.uk/covid-19-weekly-surveillance-tracker)

<https://www.facebook.com/WiganCouncilOnline/posts/10159204366010742>



## Children and Young People's Mental Health Week

This week is Children and Young People's Mental Health Week.

If you know someone who is 11-18 and needs some support, please let them know that they are not alone. Young people can go to Kooth to speak to a counsellor online and get free, confidential support.

Go to [www.kooth.com](http://www.kooth.com) to find out more.



## Census 2021

We're getting ready for the Census 2021.

The census gives the most accurate picture of all the households and people across England and Wales. The information you give is important as it helps decide how services are planned and funded in the future.

To find out more about the census, how your data will be protected and how you can get involved, including working for the census teams, go to [www.census.gov.uk](http://www.census.gov.uk)

# census 2021

## Thank you Captain Sir Tom Moore

Flags have been flying at half-mast this week in Wigan on Believe Square and at Wigan, Leigh and Hindley town halls as a mark of respect to Captain Sir Tom Moore, who passed away on Tuesday.

Captain Tom raised millions for NHS charities over the past year and at the age of 100 proved that you're never too old to help someone else.



## Hate Crime Awareness Week

This week is Hate Crime Awareness Week and we're encouraging everyone across Wigan Borough to take a stand against hate.

No one should face hate, violence or abuse because of who they are, who they love, where they're from, what they look like or what they believe.

If you've been a victim or witness of hate crime, go to [www.letsendhatecrime.com](http://www.letsendhatecrime.com) to report it and get support.



## Beautiful borough photos

Thank you so much to everyone who has sent in photos of the borough from your local walks this week, there have been some really beautiful ones.

We have shared many of them on our social media pages to help spread a little positivity! Find them at:

- [www.facebook.com/WiganCouncilOnline](https://www.facebook.com/WiganCouncilOnline)
- [www.twitter.com/WiganCouncil](https://www.twitter.com/WiganCouncil)

Thank you to Dr. Viraj Gandbhir for this stunning photo taken at Haigh Country Park.



## Pothole inspections underway

Our highways team are inspecting all of the borough's main roads following Storm Cristoph. We want to ensure residents know that immediate repairs are already underway while future improvement works are also scheduled.

The extended period of cold weather is likely to cause a lot more road defects and our teams have started.

In the last year highway teams have carried out:

- A total of 2,434 minor carriageway minor repairs
- 65 resurfacing schemes equating to 29.7km of carriageway
- 125 carriageway preventative schemes - 25.2km of road

Resurfacing work at Wallgate, Wigan.



### **MyAccount gets a revamp**

An email went out to subscribed residents on Monday about a new and improved MyAccount coming soon.

The new platform is set to make accessing Wigan Council services even easier thanks to the new and improved online tool.

The new version of MyAccount, an online platform allowing residents to access their Council Tax, Housing Benefit and other council services, will be updated in March.

The old platform will be unavailable from 31 March 2021. Once signed up, people can activate secure access to services such as Council Tax and Housing Benefits.

Please ensure residents are aware they are now able to switch over or sign up to the new platform.

To register for MyAccount, visit [www.wigan.gov.uk/MyAccount](http://www.wigan.gov.uk/MyAccount)

Sign up today at [www.wigan.gov.uk/MyAccount](http://www.wigan.gov.uk/MyAccount)



## Places for everyone

NINE councils in Greater Manchester will have their say on plans to bring forward an ambitious joint development strategy for the city-region: Places for Everyone.

Bolton, Bury, Manchester, Oldham, Rochdale, Salford, Tameside, Trafford, and Wigan councils will consider a report next Friday (12 February) on whether to form a joint committee to develop a long-term plan for jobs, new homes, and sustainable growth across their boroughs.

Places for Everyone would underpin an ambitious vision for Greater Manchester, setting out the steps that can be taken to strengthen our society, economy, and environment, and build resilience in our communities against future challenges.

The plan would map out where inclusive development can take place in areas connected by sustainable transport links, creating new homes and jobs for people across the city-region and laying the foundations for new investment and innovation.

It would also be a key tool in meeting Greater Manchester's ambition to become carbon neutral by 2038.

The proposal follows the decision of Stockport Council last year to withdraw from the Greater Manchester Spatial Framework.

The nine councils will continue to work closely with Stockport Council, which will now prepare its own local plan, to deliver on shared objectives and strategies including the Local Industrial Strategy, the Five-Year Environment Plan, and the 2040 Transport Strategy.

## City of Trees

We have received a letter from Kevin Wigley of City of Trees. See below. They have a contract with Wigan Council to plant new trees across the Borough to make places greener and more beautiful. From February to March they will be planting trees on Gollborne Park (The Bonc) and they are asking for volunteers to help them. They already have assurances of help from The Voice for Golborne and Lowton, In Bloom and of course from ourselves. Could you volunteer to help. We will provide more information when we have and of course when the current COVID situation changes



Date xxxxx

Dear Resident,

**Re: The Bonc/ Golborne Park Tree Planting Project**

I am writing to let you know of a tree planting project that is proposed for The Bonc/ Golborne Park, see plan overleaf, which identifies the areas where the new tree planting is planned. This project is part of a national initiative to plant more than 40 million trees.

The UK Government has made a legally binding commitment to achieve net zero emissions by 2050. Planting more trees is part of a package of measures to reduce the UK's carbon footprint & to lock up the carbon released from the use of fossil fuels in industry, energy production and transport. Wigan Council has also declared a State of Climate Emergency and planting more trees is one of the targets set out in its Climate Change Strategy.

Trees are key to our fight against climate change. They absorb the greenhouse gas carbon dioxide, convert it into wood & release oxygen for us to breathe. Trees intercept & use rainwater to grow, this can help to lower the risk of flooding by reducing & slowing the amount of water entering our rivers & sewers. Trees can also be good for air quality by helping to trap or disperse pollution.

The Government has launched a pilot initiative, the Local Nature Recovery Strategy, to help address the decline in our native wildlife, currently 54 native species are at risk. Greater Manchester is one of 5 pilot areas & planting more trees will be key to restoring & linking habitats so wildlife can thrive.

Covid 19 has highlighted the importance of our green spaces & trees. Experiencing nature close to where we live is important for our mental health & for providing attractive places to exercise in.

The trees that will be planted on The Bonc/Golborne Park, will be mostly native species selected for their suitability to the site conditions & their ability to capture carbon & create new habitats for wildlife. The funding for this project will pay for the first 15 years of establishment including any pruning & thinning work needed to reduce long term maintenance costs.

A site assessment & online checks have been undertaken to ensure that we are planting trees in appropriate locations & they will be set back from existing paths to maintain clear site lines.

Climate change & the decline of our wildlife are huge challenges. Planting more trees is crucial to help reduce this threat & to provide future generations with a world that is less vulnerable to flooding & extreme heat & one where there is the opportunity to experience nature.

We hope that you will join Wigan Council & City of Trees in this ambition to create a more sustainable future & where possible get involved in helping us to nurture these new trees so that they are able to provide us all with their many benefits.

If you would like to find out more about this planting proposal, please contact Kevin Wigley by e-mailing [kevin@cityoftrees.org.uk](mailto:kevin@cityoftrees.org.uk)

Yours sincerely

Best Wishes

Councillor Gena Merrett  
Councillor Yvonne Klieve  
Councillor Susan Gambles



## **Do you or anyone you know need help, advice or support?**



### ***Yvonne, Susan, and Gena. Councillors for Golborne and Lowton West***

**We are not doing face to face surgeries during the pandemic but we are still here to help you.**

**If you need advice, information, support or some help please contact us.  
We post information every day on our Facebook Page  
[@GWLcouncillors](#).**

**You can send us a direct private message to the page.  
Or contact us by email or phone to our contact addresses below.**

**Cllr Yvonne Klieve - Tel 07828 064832. Email [Y.Klieve@wigan.gov.uk](mailto:Y.Klieve@wigan.gov.uk)**

**Cllr Susan Gambles - Tel 01942 568251. Email [Susan.gambles@wigan.gov.uk](mailto:Susan.gambles@wigan.gov.uk)**

**Cllr Gena Merrett - Tel 07525336608. Email [gena.merrett@wigan.gov.uk](mailto:gena.merrett@wigan.gov.uk)**